



## Support for special guardians

Telford & Wrekin Council have a dedicated support team for special guardians.

You are not alone and this is the support that Telford and Wrekin can provide you with:

- support groups;
- quarterly newsletter;
- access to training;
- signposting to other organisations;
- financial package of support when the child was previously in the care of the local authority; and
- financial support at the discretion of the local authority if you are experiencing hardship after applying to all the benefits you are entitled too.

## Useful contacts and links:

### Telford & Wrekin Council Kinship Team

Email: [kinshipenquiries@telford.gov.uk](mailto:kinshipenquiries@telford.gov.uk)

Tel: 01952 380353

<https://kinship.telford.gov.uk>

### Family Rights Group

Tel: 0808 801 0366 (free advice line)

[www.frg.org.uk](http://www.frg.org.uk)

### Kinship

Tel: 0300 123 7015

[www.kinship.org.uk](http://www.kinship.org.uk)

### CoramBAAF

(British Association for Adoption and Fostering)

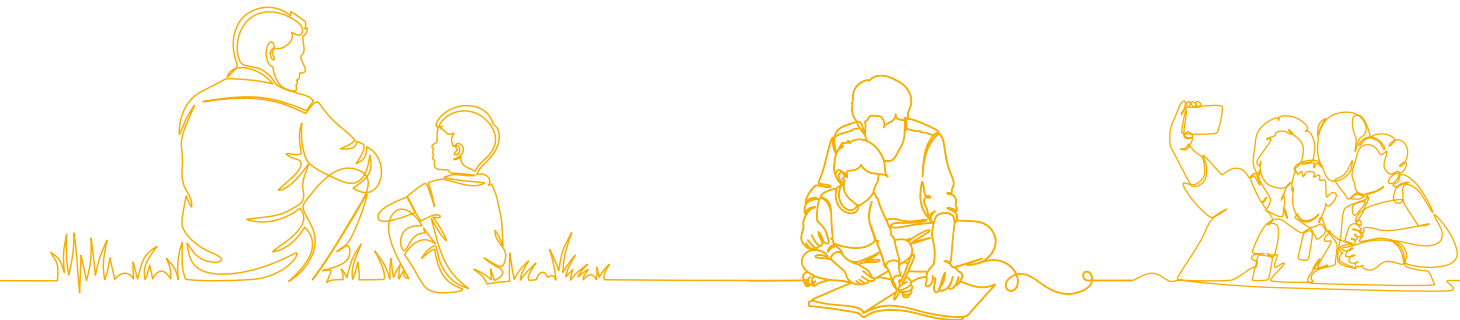
Tel: 020 7520 0300

[www.corambaaf.org.uk](http://www.corambaaf.org.uk)



kinship telford

# Special Guardianship Orders



# What is a special guardianship order?

A special guardianship order is a court order that gives the special guardian enhanced parental responsibility for the child. The order restricts the birth parents' rights but does not permanently end them.

# Who can apply?

The following people may apply to be special guardians:

- any guardian of the child;
- any individual who has a child arrangement order or any person where a child arrangement order is in force and who has the consent of the person in whose favour the child arrangement order is made;
- anyone the child has lived with for at least three years out of the last five;
- anyone with the consent of the local authority if the child is in care;
- a local authority foster carer with whom the child has lived for at least one year preceding the application;
- anyone who has the consent of those with parental responsibility;
- anyone who has the leave of the court.

**NOTE: You must be over 18 years of age.**

# Assessment

The assessment is in depth and can feel intrusive sharing your own journey. It will include aspects of your life including finances, employment history, medicals, and information about your birth children if you have any.

You will need to be flexible and make time for the assessment as the date for completion is often set by the court. The assessment process may be a bumpy road and cannot be rushed.

Once the order is granted you have the authority to make day-to-day decisions for the child and allows them to maintain a legal connection with their birth parents. The journey will continue as you build and enjoy life together.

# Support plans

The support plan serves as legal documentation and can be reviewed by the court if needed. It is important to keep a copy as this highlights the support available to special guardians and children. You should ask your solicitor to check the support plan.

